

## ELEVATOR

<b>Elevator drive</b> .....	Rack and pinion
<b>Maximum passengers</b> .....	30
<b>Total base unit weight</b> .....	9,000 lbs (4,082 kg)
<b>Capacity</b> .....	6,000 lbs (2,722kg)

## CAR/GATES

<b>Car weight</b> .....	5,765 lbs (2,615 kg)
<b>Maximum car speed</b> .....	175 ft/min (53 m/min)
<b>Interior dimensions</b> .....	12'4" L x 4'8" W x 7'2" H (3.76 m L x 1.42 m W x 2.18 m H)

## TOWER

<b>Maximum tower height</b> .....	500' (152m) Consult Factory for Greater Heights
<b>Dimensions of tower section</b> .....	28" L x 28" W x 60" H (.71 m L x .71 m W x 1.52 m H)
<b>Weight of tower section</b> .....	332 lbs (151 kg)
<b>Wall ties</b> .....	Adjustable strut
<b>Tie-in intervals</b> .....	30 ft (9.14 m)

## MOTOR/POWER

<b>Motors</b> .....	(2) 35 Hp, 33 kW
<b>Power required</b> .....	75 KVA, 480 VAC, 60 Hz, 3Ø
<b>Motor control</b> .....	Variable Frequency Drive (VFD)
<b>Electrical outlet</b> .....	120 VAC
<b>Base disconnect</b> .....	90 Amps Circuit Breaker in NEMA 4 Enclosure
<b>Full load current</b> .....	90 Amps
<b>Traveling Cable</b> .....	Mutli-Conductor Type W - Tower Height Plus 30 ft (9.14 m)

## BRAKES

<b>Brake (2)</b> .....	Spring Set Electrical Release Multiple Disc Brake
<b>Safety overspeed Governor</b> .....	Centrifugally Actuated Multiple Friction Disc Brake
<b>Stopping distance accuracy</b> .....	± .5" (± 12mm)
<b>Brake Torque</b> .....	295 ft-lb (400 N•m) Per Brake

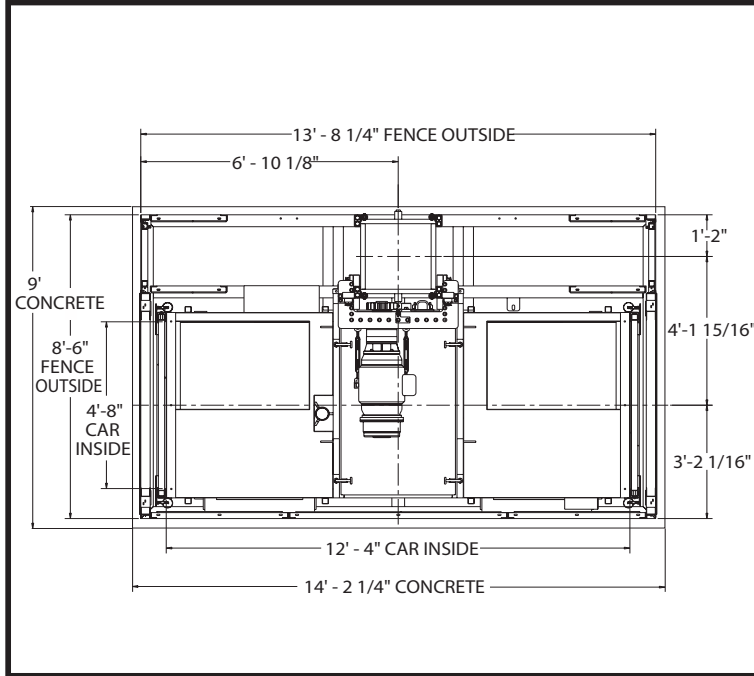
### STANDARD BASE UNIT

- Fully assembled enclosed car
- Overspeed governor
- Manually Operated Vertically bi-parting Gates
- Control and Limit switches
- 20' of tower for 0 Lifting Height
- Manual Control
- GFI Receptacle in Car
- Base Fence Enclosure with One Landing Gate
- Base Disconnect Box
- Buffer stand and Springs
- Power Cord Guide Wheel Assembly
- Rooftop Control
- Variable Frequency Drive (VFD)
- Car Lighting

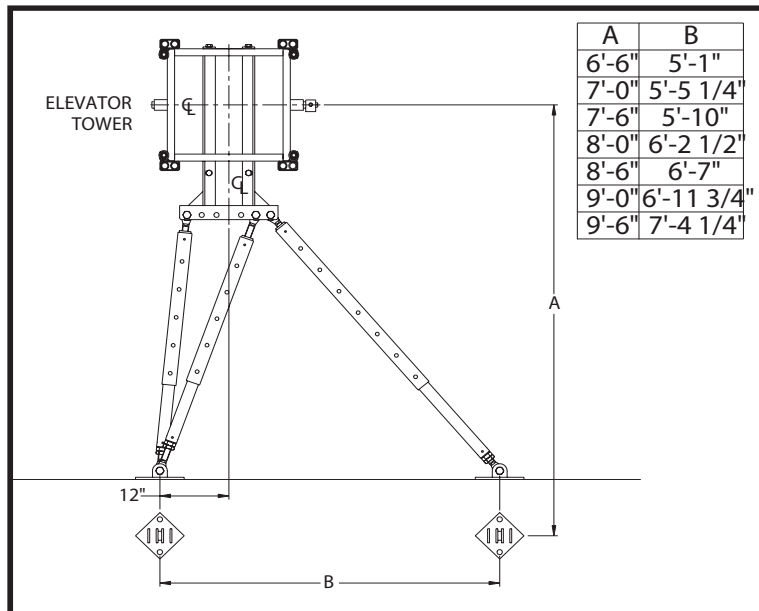
### OPTIONAL FEATURES & SERVICES

- Base Platform and Stairs
- Landing Gates
- Communication or Signal System
- Preventative Maintenance
- Drop Tests & Test Weights

## FOUNDATION DIMENSIONS



## WALL TIE DETAIL



Dimensions are typical, please consult with engineering for specific configurations.

Elevators are designed to comply with ANSI A10.4 and / or A17.1 Part XV. Use of products must conform to safe practice and applicable statutes, regulations, codes, and ordinances. Drawings are illustrative only and do not necessarily depict exact configurations of products offered at a particular time.

Foundation is 10" thick 4000 PSI concrete pad with a single mat of #4 rebar on 12" centers 3" from the bottom.

## BASIC ELEMENTS

