

ELEVATOR

Elevator drive	Rack-and-pinion
Maximum passengers	11
Total base unit weight	5,200 lbs (2,358 kg)
Capacity	2,200 lbs (998 kg)

CAR/GATES

Car weight	3,200 lbs (909 kg)
Maximum car speed	120 ft/min (37 m/min)
Interior dimensions	6'0" L x 4'1" W x 7'2" H (1.82 m L x 1.24 m W x 2.2 m H)

TOWER

Maximum guide rail height	900' (274.32 m)
Dimensions of guide rail	4" L x 22" W x 118.74" H (.10 m L x .55 m W x 3.01 m H)
Weight of guide rail	208 lbs (94.43kg)
Wall ties	Adjustable Tie-in Brackets
Tie-in intervals	10' (3.28 m)

MOTOR/POWER

Electric Power	2 X 10 Hp (15 kW)
Power required	29 KVA, 480 VAC, 60 Hz, 3Ø
Electrical outlet	Full Line Voltage at Start - Variable Frequency Drive available
Base disconnect	120 VAC on Rooftop
Full load current	Circuit Breaker in NEMA 4 Enclosure
Traveling cable	35 Amps Multi-Conductor Type W

BRAKES

Brake	Spring Set, Electrical Release Multiple Disk Brake
Safety overspeed governor	Centrifugally Actuated Multiple Friction Disc Brake
Stopping distance accuracy	± 2" (± 50 mm)
Emergency lowering	Controlled Descent by Centrifugal Clutch
Brake torque	75 lb./ft. (102 Nm) X 2

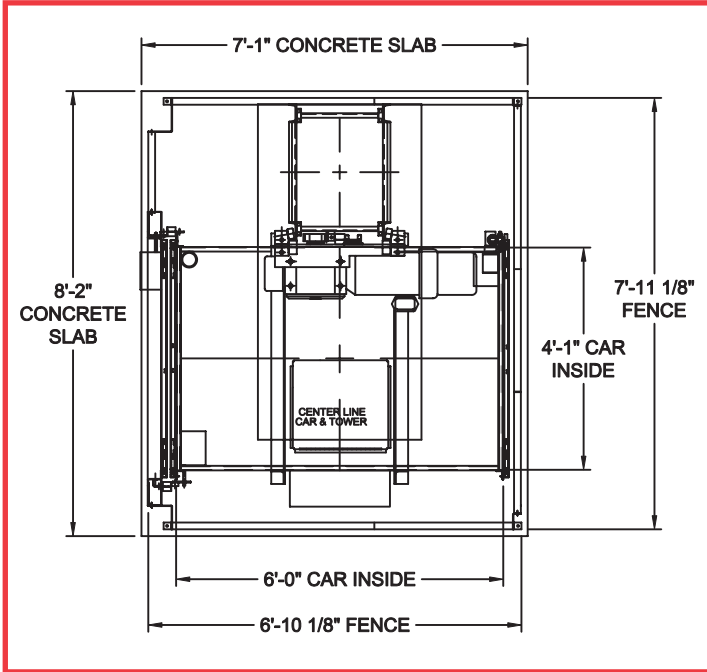
STANDARD BASE UNIT

- Fully assembled enclosed car
- Base Fence Enclosure
- Base Disconnect Box
- Buffer Stand and Springs
- Power Cord Guide Wheel Assembly
- Interior Cab Lighting
- Auxiliary Hand Control for Installation
- Overspeed governor
- Manually Operated Vertically bi-parting Gate
- Control and Limit switches
- 20' of Tower for 0 Lifting Height
- GFI Receptacle Inside Car

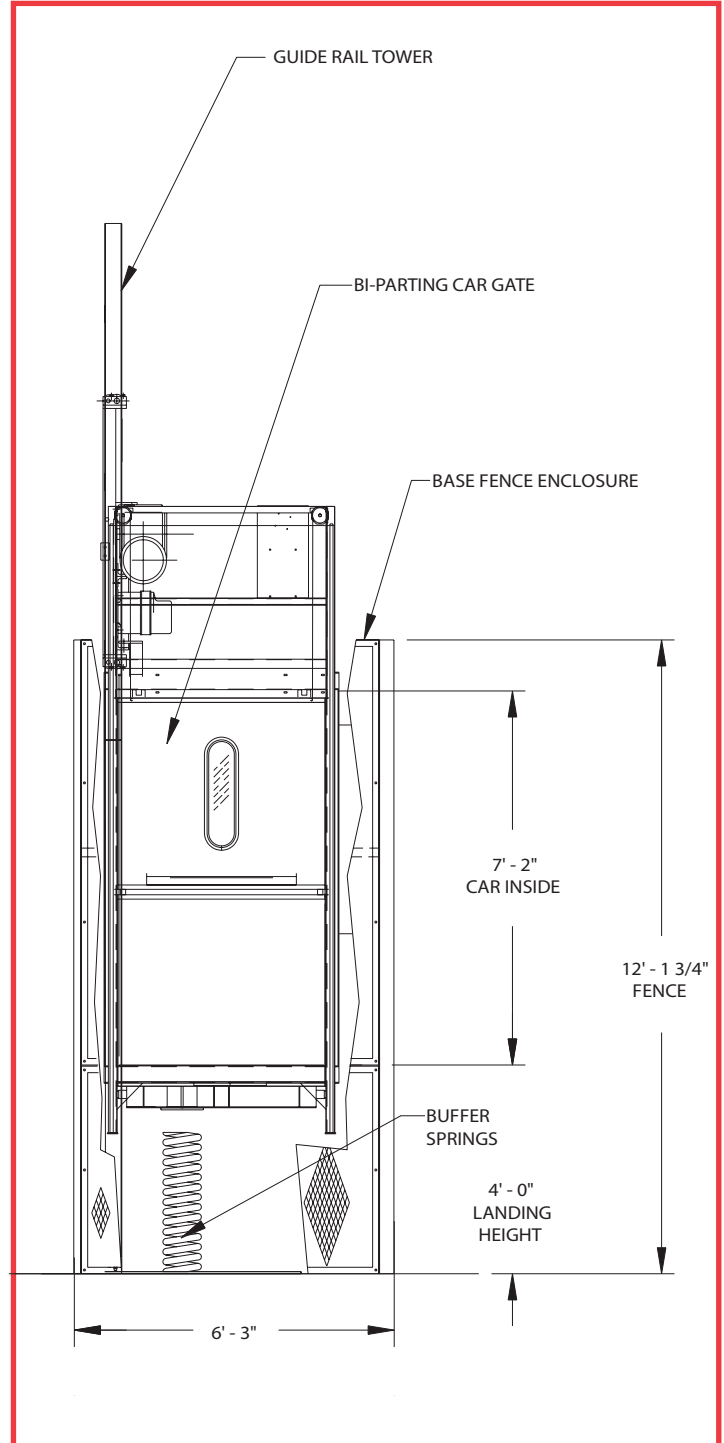
OPTIONAL FEATURES AND SERVICES

- Landing Gates
- Communication or Signal System
- Preventative Maintenance
- Drop Tests & Test Weights

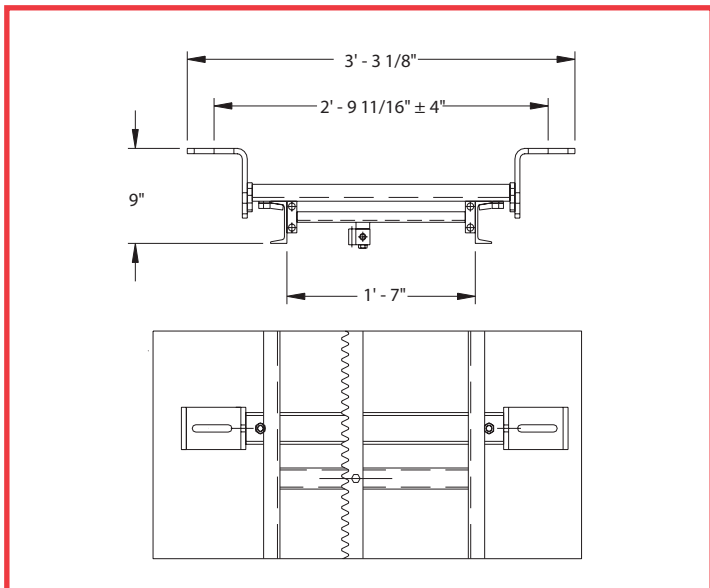
FOUNDATION DIMENSIONS



BASIC ELEMENTS



WALL TIE DETAIL



Dimensions are typical, please consult with engineering for specific configurations.

Elevators are designed to comply with ANSI A10.4 and / or A17.1 Part XV. Use of products must conform to safe practice and applicable statutes, regulations, codes, and ordinances. Drawings are illustrative only and do not necessarily depict exact configurations of products offered at a particular time.

Foundation is 10" thick 4000 PSI concrete pad with a single mat of #4 rebar on 12" centers 3" from the bottom.